

Madison, Wisconsin

CITY OF MADISON

MADISON WATER UTILITY

DEPARTMENT OF PUBLIC WORKS

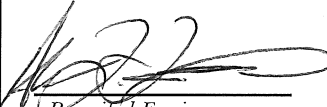
PLAN OF PROPOSED IMPROVEMENT

PUBLIC IMPROVEMENT PROJECT
APPROVED

JANUARY 3, 2017

BY THE COMMON COUNCIL
OF MADISON, WISCONSIN

PUBLIC IMPROVEMENT DESIGN
APPROVED BY:

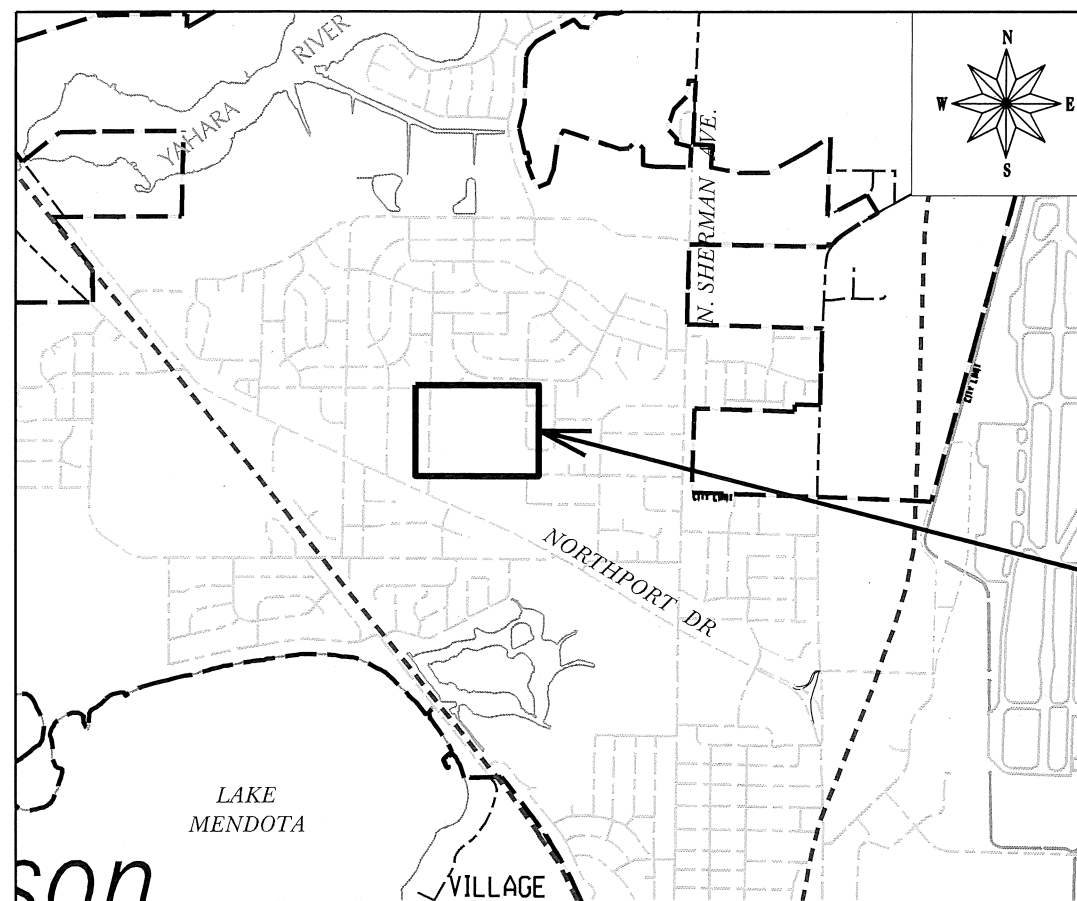
 2/8/17
Principal Engineer Date
Madison Water Utility

LAKEVIEW RESERVOIR LANDSCAPING

INDEX OF SHEETS

SHEET NO.	1	TITLE SHEET
SHEET NO.	EC-1	EROSION CONTROL PLAN
SHEET NO.	G-1	GRADING PLAN
SHEET NO.	P-1 & P-2	PLANTING PLAN
SHEET NO.	D-1 & D-2	DETAILS

CITY PROJECT NO. 10439
CONTRACT NO. 7880



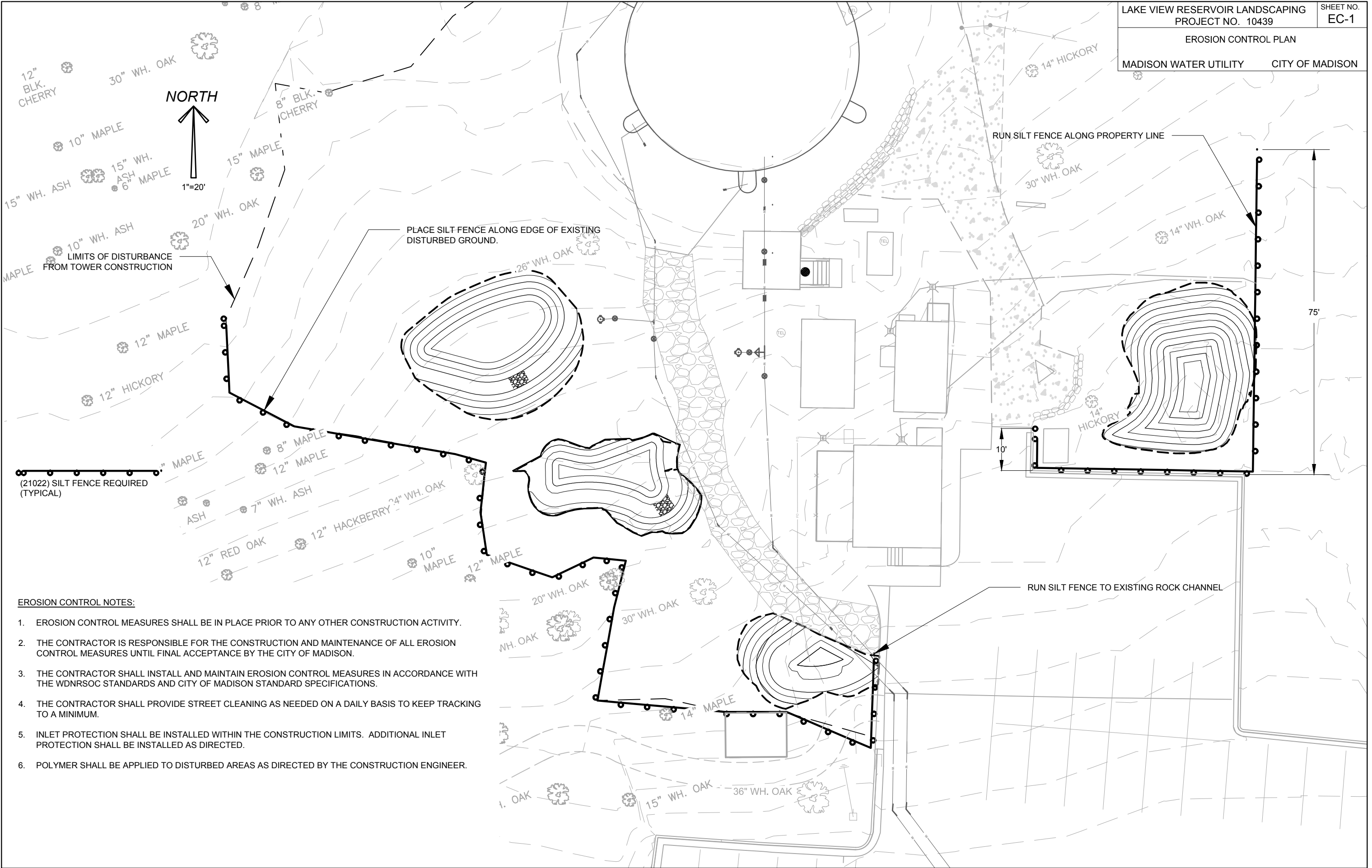
PROJECT LOCATION

PLOT SCALE: _____

PLOT NAME: _____

REV. DATE: _____

ORIGINATOR: CITY OF MADISON, STREETS DIVISION



(21022) SILT FENCE REQUIRED (TYPICAL)

EROSION CONTROL NOTES:

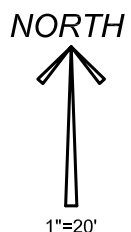
1. EROSION CONTROL MEASURES SHALL BE IN PLACE PRIOR TO ANY OTHER CONSTRUCTION ACTIVITY.
2. THE CONTRACTOR IS RESPONSIBLE FOR THE CONSTRUCTION AND MAINTENANCE OF ALL EROSION CONTROL MEASURES UNTIL FINAL ACCEPTANCE BY THE CITY OF MADISON.
3. THE CONTRACTOR SHALL INSTALL AND MAINTAIN EROSION CONTROL MEASURES IN ACCORDANCE WITH THE WDNR SOC STANDARDS AND CITY OF MADISON STANDARD SPECIFICATIONS.
4. THE CONTRACTOR SHALL PROVIDE STREET CLEANING AS NEEDED ON A DAILY BASIS TO KEEP TRACKING TO A MINIMUM.
5. INLET PROTECTION SHALL BE INSTALLED WITHIN THE CONSTRUCTION LIMITS. ADDITIONAL INLET PROTECTION SHALL BE INSTALLED AS DIRECTED.
6. POLYMER SHALL BE APPLIED TO DISTURBED AREAS AS DIRECTED BY THE CONSTRUCTION ENGINEER.

PLOT SCALE: 1"=40'

PLOT NAME: #####

REV. DATE: _____

ORIGINATOR: ----



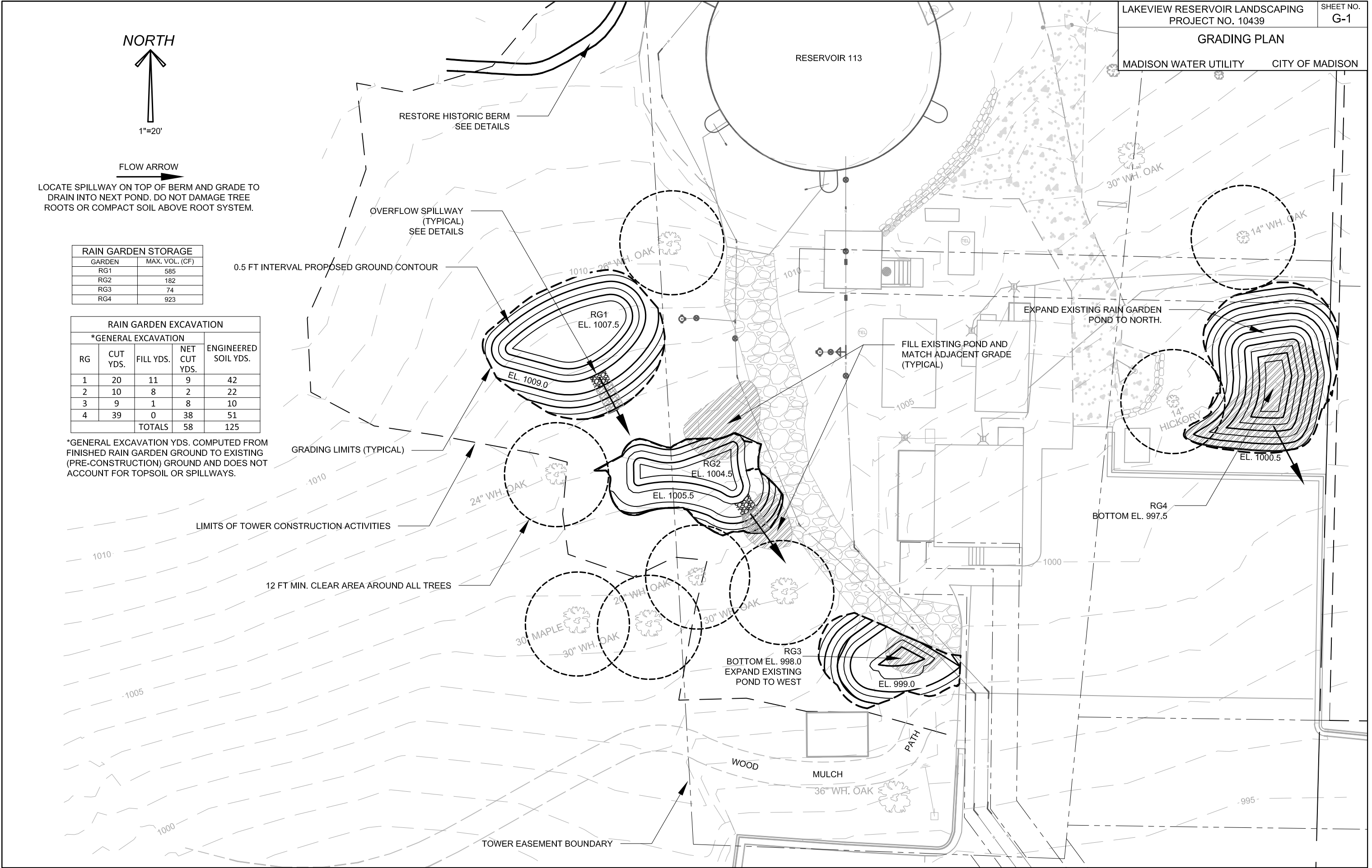
FLOW ARROW
LOCATE SPILLWAY ON TOP OF BERM AND GRADE TO DRAIN INTO NEXT POND. DO NOT DAMAGE TREE ROOTS OR COMPACT SOIL ABOVE ROOT SYSTEM.

RAIN GARDEN STORAGE	
GARDEN	MAX. VOL. (CF)
RG1	585
RG2	182
RG3	74
RG4	923

RAIN GARDEN EXCAVATION				
*GENERAL EXCAVATION				
RG	CUT YDS.	FILL YDS.	NET CUT YDS.	ENGINEERED SOIL YDS.
1	20	11	9	42
2	10	8	2	22
3	9	1	8	10
4	39	0	38	51
TOTALS		58	125	

*GENERAL EXCAVATION YDS. COMPUTED FROM FINISHED RAIN GARDEN GROUND TO EXISTING (PRE-CONSTRUCTION) GROUND AND DOES NOT ACCOUNT FOR TOPSOIL OR SPILLWAYS.

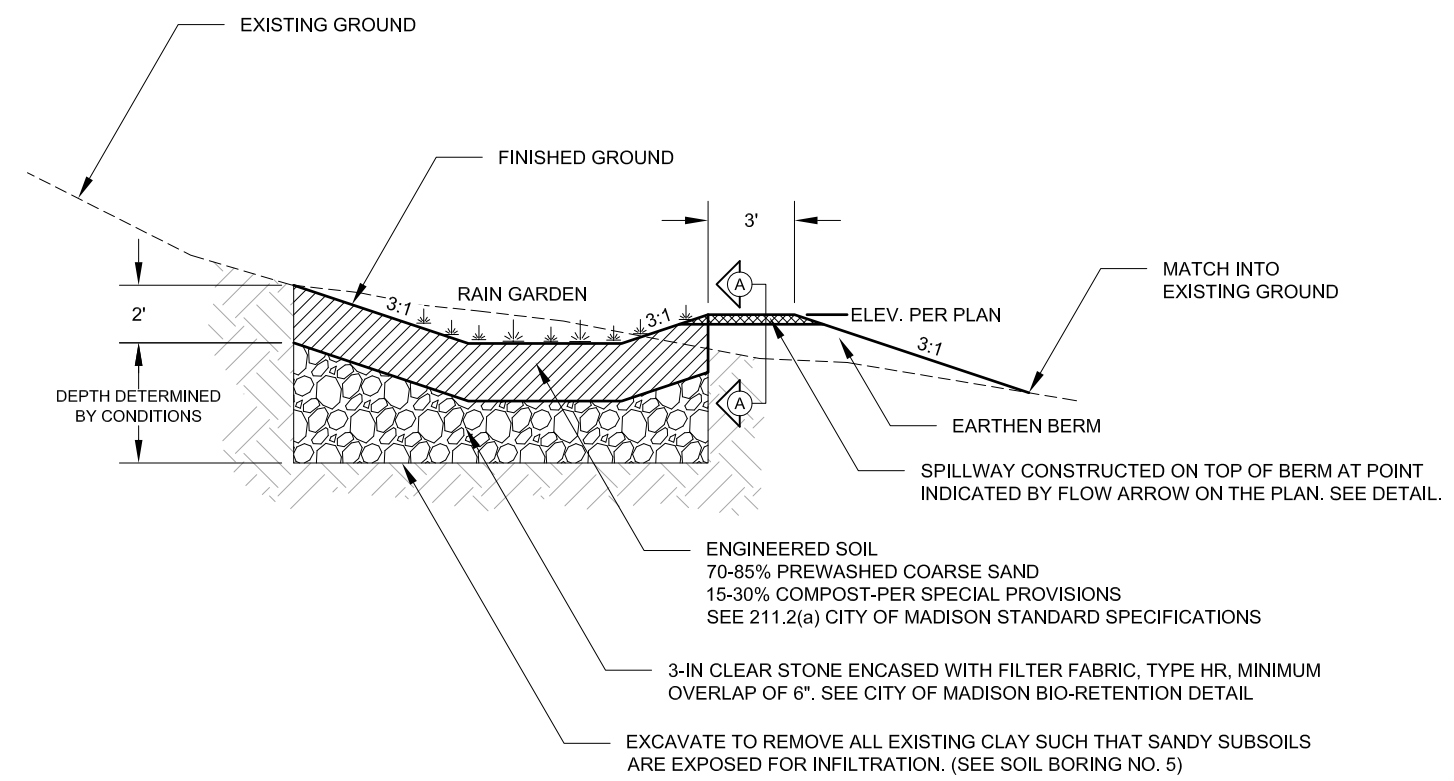
PLOT SCALE: 1"=40'
PLOT NAME: #####
REV. DATE: _____
ORIGINATOR: _____



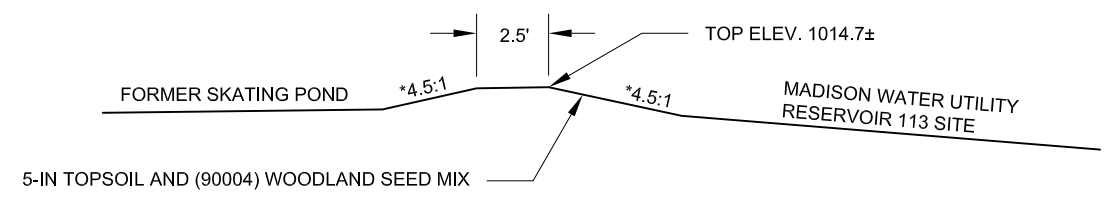
PLOT SCALE: _____ PLOT NAME: _____ REV. DATE: _____ ORIGINATOR: CITY OF MADISON STREETS DIVISION

PLANT NAME	SCIENTIFIC NAME	APRX MATURE HEIGHT	APRX MATURE SPREAD	SIZE	B & B	POTTED	STAKE	WRAP	Plant in Spring	TOTAL Qty
Trees										
black oak	<i>Quercus velutina</i>	60'	60'	3" Cal.	X		X	X	X	3
white oak	<i>Quercus alba</i>	90'	80'	3" Cal.	X		X	X	X	3
northern red oak	<i>Quercus rubra</i>	75'	60'	3" Cal.	X		X	X	X	2
shagbark hickory	<i>Carya ovata</i>	80'	50'	3" Cal.	X		X	X	X	4
common hackberry	<i>Celtis occidentalis</i>	70'	60'	3" Cal.	X		X	X	X	2
TOTAL TREES										14
Shrubs										
common witchhazel	<i>Hamamelis virginiana</i>	20'	25'	5 Gal.		X			X	8
American hazelnut	<i>Corylus Americana</i>	10'	8'	5 Gal.		X			X	5
American elderberry	<i>Sambucus canadensis</i>	10'	10'	5 Gal.		X			X	3
nannyberry viburnum	<i>Viburnum lentago</i>	20'	10'	5 Gal.		X			X	5
TOTAL SHRUBS										21

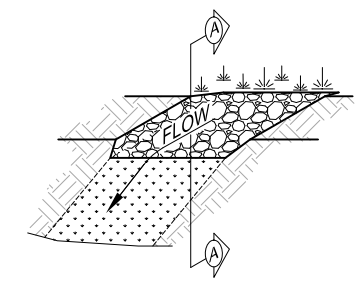
PLANT NAME	SCIENTIFIC NAME	Zone 1 (wet)	Zone 2 (mesic)	SIZE	Rain Garden # 1	Rain Garden # 2	Rain Garden # 3	Rain Garden # 4	TOTAL Qty
Rain Garden Plants									
switch grass	<i>Panicum virgatum</i>		X	2" plug	28	15	8	45	96
common oak sedge	<i>Carex pensylvanica</i>		X	2" plug	27	15	8	45	95
black-eyed Susan	<i>Rudbeckia hirta</i>		X	2" plug	27	15	8	45	95
columbine	<i>Aquilegia canadensis</i>		X	2" plug	25	15	6	46	92
prairie dropseed	<i>Sporobolus heterolepis</i>		X	2" plug	25	16	8	47	96
lanceleaf coreopsis	<i>Coreopsis lanceolata</i>		X	2" plug	25	15	8	45	93
sky blue aster	<i>Aster azureum</i>	X		2" plug	43	16	5	9	73
wild geranium	<i>Geranium maculatum</i>		X	2" plug	25	15	8	45	93
brown fox sedge	<i>Carex vulpinoidea</i>	X		2" plug	44	16	5	11	76
lavendar/ anise hyssop	<i>Agastache foeniculum</i>		X	2" plug	25	15	8	45	93
great blue lobelia	<i>Lobelia siphilitica</i>	X		2" plug	43	16	5	9	73
butterfly weed	<i>Asclepias tuberosa</i>		X	2" plug	25	15	8	47	95
little bluestem	<i>Schizachyrium scoparium</i>		X	2" plug	25	15	8	45	93
lanceleaf coreopsis	<i>Coreopsis lanceolata</i>		X	2" plug	25	18	8	47	98
nodding onion	<i>Allium cernuum</i>		X	2" plug	25	15	8	45	93
marsh phlox	<i>Phlox glaberrima interior</i>		X	2" plug	25	16	8	45	94
spiderwort	<i>Tradescantia ohioensis</i>	X		2" plug	43	15	5	9	72
pale purple coneflower	<i>Echinacea pallida</i>		X	2" plug	25	15	8	47	95
Riddell's goldenrod	<i>Solidago riddellii</i>	X		2" plug	43	16	2	9	70
TOTAL RAIN GARDEN PLANTS									1685
Rain Garden #1 (sf)		573	216	357					
Rain Garden #2 (sf)		294	80	214					
Rain Garden #3 (sf)		132	22	110					
Rain Garden #4 (sf)		686	47	639					



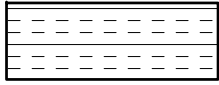
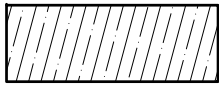
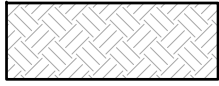
TYPICAL RAIN GARDEN
CONSTRUCTION
CROSS SECTION

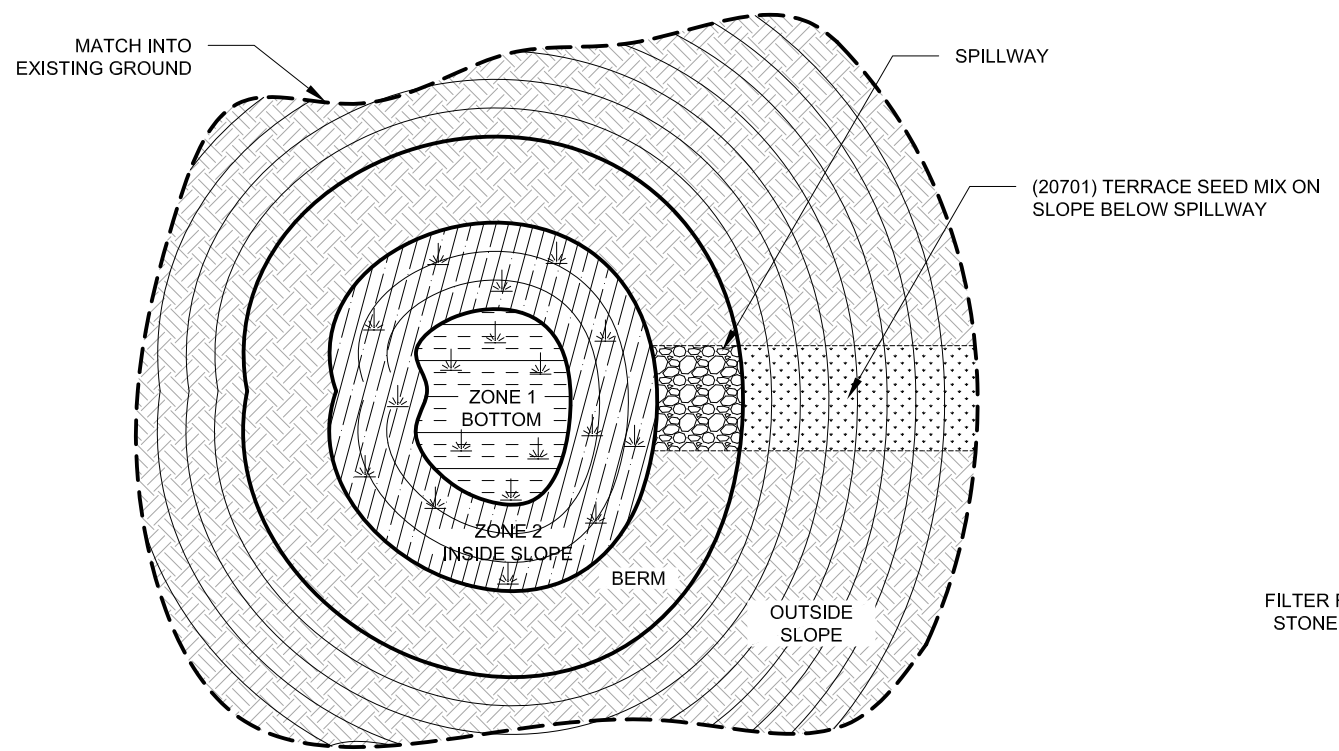


HISTORIC SKATING POND
BERM TYPICAL CROSS
SECTION
CROSS SECTION



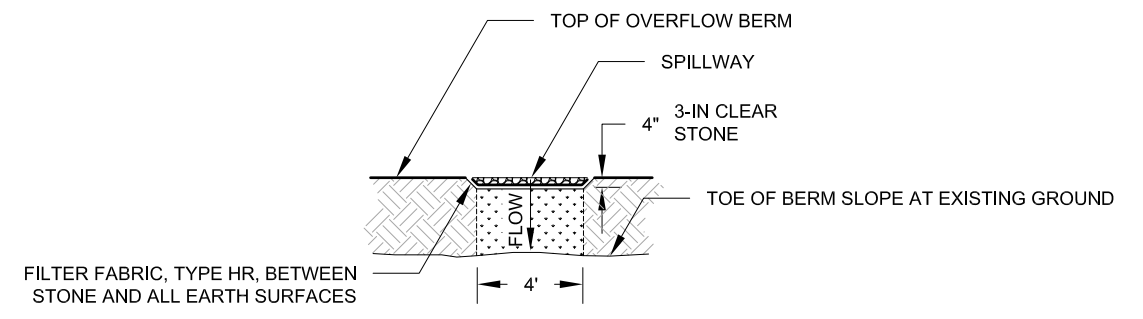
RAIN GARDEN SPILLWAY
ISOMETRIC VIEW

-  ZONE 1 - WET
(90003) RAIN GARDEN 2-IN
PLUGS
-  ZONE 2 - MESIC
(90003) RAIN GARDEN 2-IN
PLUGS
-  5-IN TOPSOIL AND (90004)
WOODLAND SEED MIX



TYPICAL RAIN GARDEN
PLANTING
PLAN VIEW

NOTE: REFER TO SHEET P-2, PLANTING SCHEDULE, FOR SPECIFIC ZONE 1 & ZONE 2 PLANTING REQUIREMENTS.



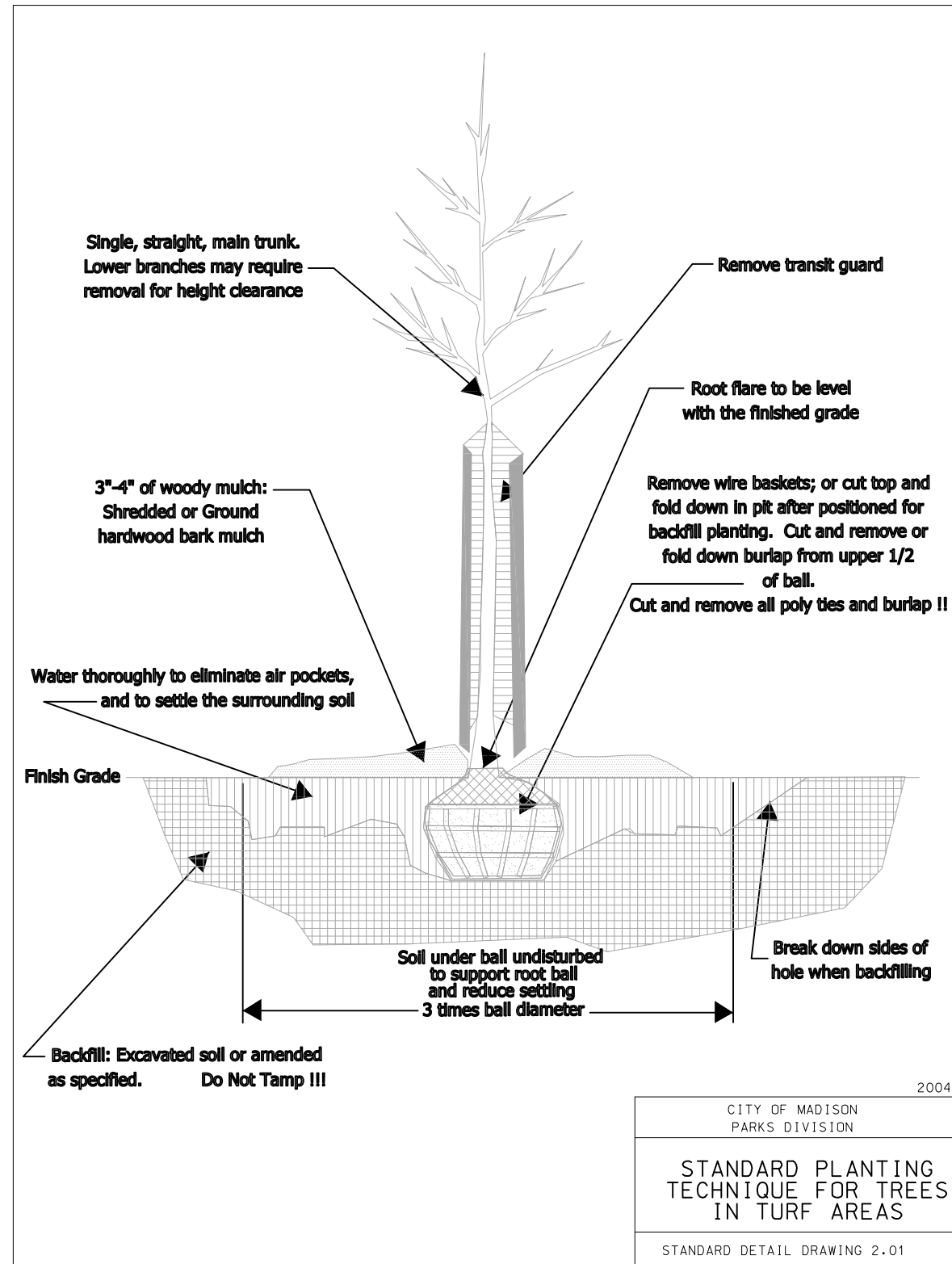
RAIN GARDEN SPILLWAY:
SECTION A-A

PLOT SCALE: 1"=40'

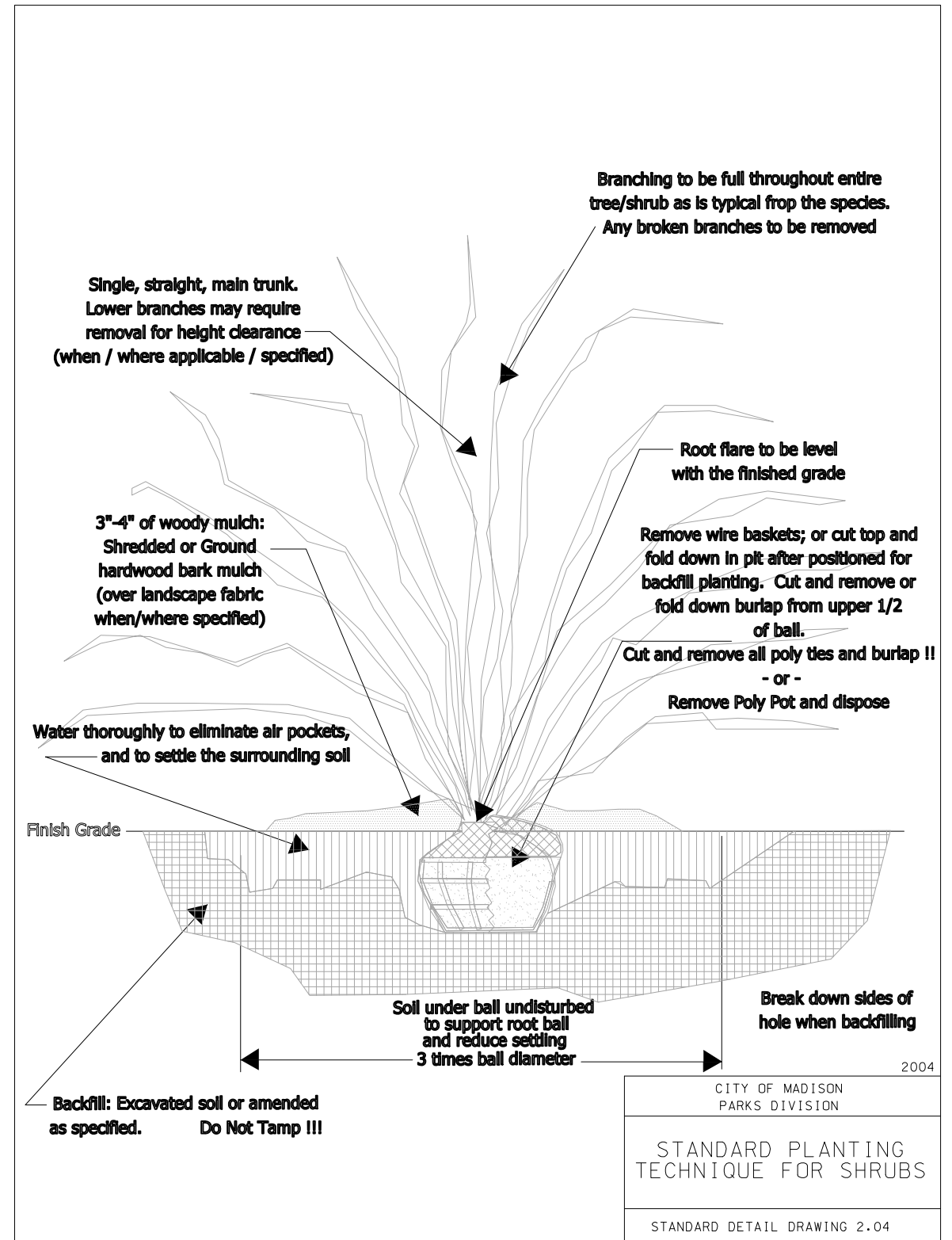
PLOT NAME: #####

REV. DATE: _____

ORIGINATOR: ---



2.01



2.04

PLOT SCALE: 1"=40'

PLOT NAME: #####

REV. DATE: _____

ORIGINATOR: _____